

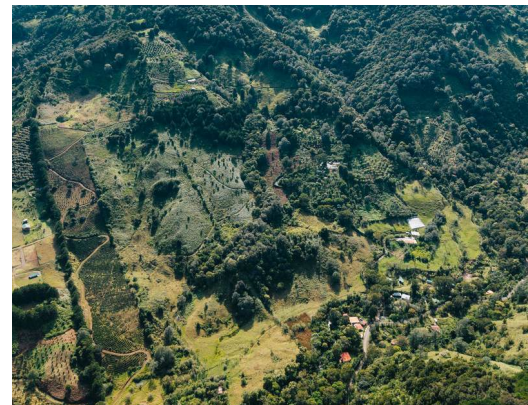
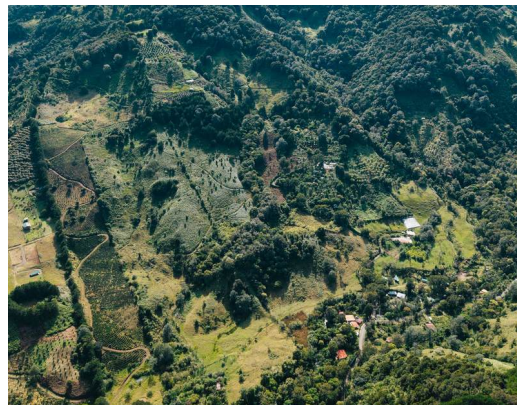
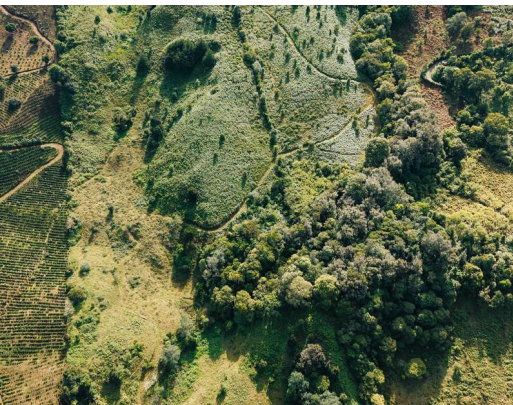
Finca Valverde

📍 Dota, San Jose

\$1,400,000

ID: 24960

Property Type: Land • Size: 21,000,000 SQ M •



• Status: Active/Published

Property Description

An impressive 30-hectare mountain estate is for sale in Copey de Dota, an area known for its cool climate, lush nature, and peaceful atmosphere. This property is a true private forest reserve—ideal for anyone seeking a natural retreat, an eco-tourism project, or a conservation-focused investment. The estate features mixed topography with forested areas, natural trails, open spaces, and direct access from the main road. It has natural spring water as well as potable water from the public aqueduct, and includes all essential utilities for developing any type of project.

Key Features:

- 30 hectares in a pristine mountain region
- Direct access from the main road
- Spring water + potable water from the aqueduct
- Electricity and sewage services
- Several streams and rivers running through the property
- Abundant forest and exceptional biodiversity
- Total privacy and a peaceful natural environment

Nearby Attractions:

- Mountain lodges and eco retreats
- A well-known local vineyard
- An astronomy capsule for stargazing experiences
- Natural viewpoints, hiking trails, reserves, and parks

This estate is perfect for developing an eco lodge, mountain tourism project, retreat center, sustainable agriculture initiative, or simply for those wishing to own a large property surrounded by untouched nature in an exclusive, high-value ecological region.

Additional

- ID 24960
- For Sale
- \$1,400,000
- Active/Published
- Land
- View : Mountain

Costa Rica Direct: +506 2656 0856

US Number: +1 814 500 3379

80 m Oeste de la Iglesia Catolica, Guanacaste, Samara, 50206

